

N.Y. INSTITUT FRANCAIS  
AUX ETATS-UNIS.

—

LOAN EXHIBITION  
OF FRENCH ART





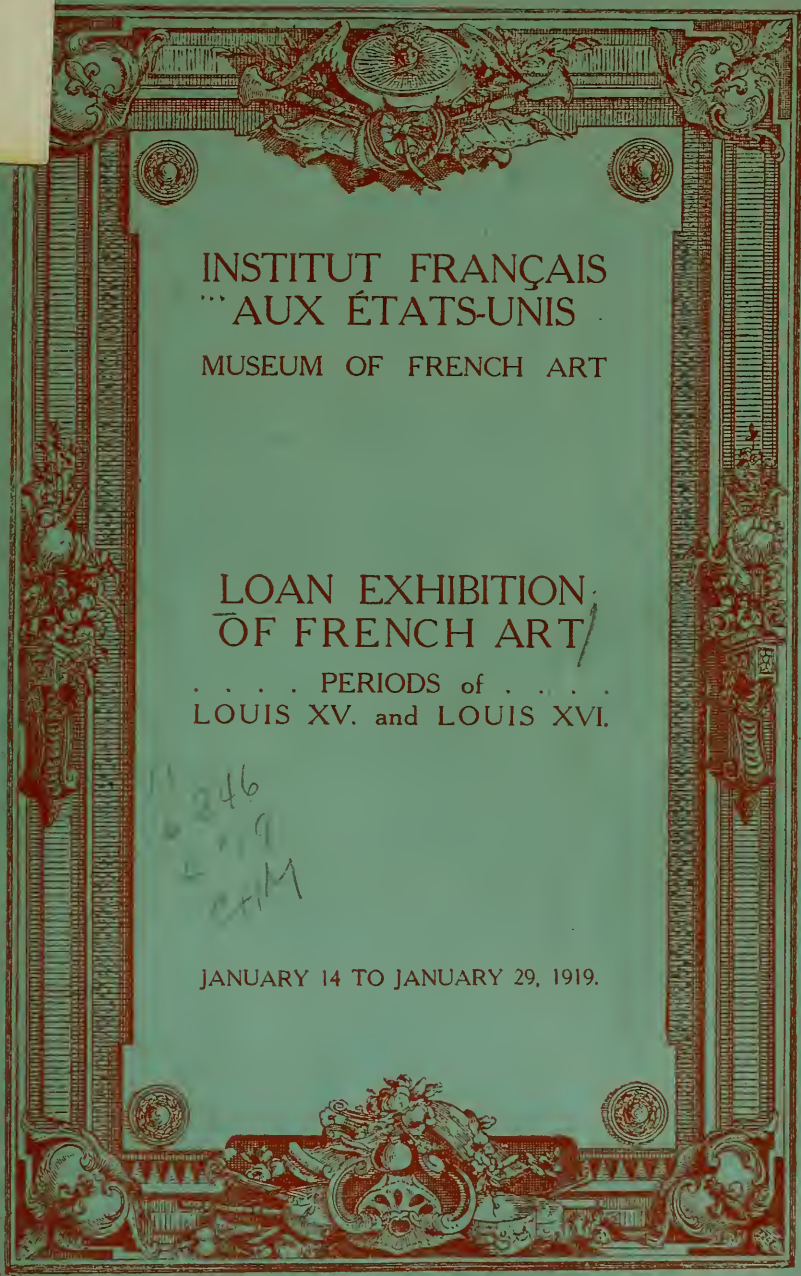






N  
6846  
L79  
CHM

(A)



INSTITUT FRANÇAIS  
"AUX ÉTATS-UNIS"  
MUSEUM OF FRENCH ART

LOAN EXHIBITION  
OF FRENCH ART  
... PERIODS of ...  
LOUIS XV. and LOUIS XVI.

6846  
L79  
CHM

JANUARY 14 TO JANUARY 29, 1919.









# DEMOTTE

of Paris

27 rue de Berri.

For many years the house of DEMOTTE has occupied a unique field in Paris, specializing in

## FRENCH ART OF THE MIDDLE AGES

*We extend to you a cordial invitation to visit the American Branch at 8 East 57th Street, where a Private Collection of the finest Masterpieces, brought from Paris owing to the War, is on view.*

SCULPTURES  
TAPESTRIES  
FURNITURE

STATUARY  
PAINTINGS  
RARE FABRICS

The interest now being taken by Americans in French Gothic Art is particularly fitting, because the noble appeal and humanity of this art typifies France and her beautiful cathedrals.

8 East 57th Street, New York

FRENCH & CO  
ANTIQUE TAPESTRIES  
FURNITURE AND TEXTILES  
WORKS OF ART



THE present collection of Antique Tapestries shown in the galleries of French & Co. is the largest of any offered to the private purchaser in the United States. It contains a majority of the great examples which have not as yet been absorbed by museums or private collections. There are verdure, allegorical and historical subjects—single panels and in series.

6 EAST 56th STREET  
NEW YORK

# FRENCH INSTITUTE IN THE UNITED STATES

ARTS

SCIENCES

LITERATURE

## OFFICERS

- |                                     |   |  |
|-------------------------------------|---|--|
| <p><i>Hon. Presidents:</i></p>      | } | <p>HIS EXCELLENCY THE FRENCH AMBASSADOR TO THE U. S.<br/>         HIS EXCELLENCY THE AMERICAN AMBASSADOR TO FRANCE.<br/>         THE HONORABLE THE SECRETARY OF STATE OF THE U. S.<br/>         THE HONORABLE THE MINISTER OF FOREIGN AFFAIRS OF FRANCE.<br/>         THE HONORABLE THE MINISTER OF PUBLIC INSTRUCTION AND<br/>         FINE ARTS OF FRANCE.</p> |
| <p><i>Hon. Vice-Presidents:</i></p> | } | <p>THE HONORABLE THE MINISTER OF COMMERCE OF FRANCE.<br/>         THE HONORABLE THE SECRETARY OF COMMERCE OF THE U. S.<br/>         HIS EXCELLENCY THE GOVERNOR OF NEW YORK.<br/>         THE HONORABLE THE CONSUL-GENERAL OF FRANCE AT NEW YORK.<br/>         THE HONORABLE THE MAYOR OF NEW YORK.</p>  |

*President of the Institute:* McDougall Hawkes.

- |                         |   |  |
|-------------------------|---|--|
| <i>Vice-Presidents:</i> | } | <p>J. SANFORD SALTUS,<br/>         SAMUEL W. FAIRCHILD,<br/>         HENRY ALFRED TODD,<br/>         WILLIAM ANDREWS CLARK,<br/>         GEORGE NORTON MILLER.</p> |
|-------------------------|---|--|

*Secretary General:* THOMAS HASTINGS.

## ARTS SECTION :

# MUSEUM OF FRENCH ART

French Institute in the United States.

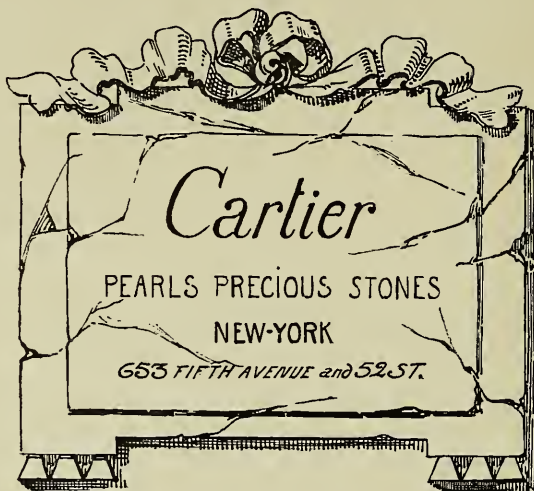
## BOARD OF TRUSTEES

- |  |   |
|--|---|
| <p>JOHN G. AGAR, President National Arts Association.<br/>         W. R. BRITTON, Treasurer of the Museum of French Arts.<br/>         NICHOLAS MURRAY BUTLER, President, France-America Society, New York.<br/>         WILLIAM ANDREWS CLARK.<br/>         SAMUEL W. FAIRCHILD, Chairman of the Committee on Trade, Chamber of Commerce of the State of New York.<br/>         JOSEPH H. FREEDLANDER.<br/>         CASS GILBERT.<br/>         THOMAS HASTINGS, President Society Beaux-Arts Architects.<br/>         HENRY HORNOSTEL.<br/>         OTTO H. KAHN.<br/>         THOMAS H. KELLY.<br/>         LUCIEN JOUVAUD, President Soc. Francaise de Bienfaisance (French Hospital), N.Y.</p> | <p>GEORGE F. KUNZ, President American Scenic and Hist. Pres. Society.<br/>         JOHN B. LUNGER.<br/>         GEORGE NORTON MILLER.<br/>         EDWARD T. NEWELL, President, American Numismatic Society.<br/>         W. FRANCKLYN PARIS.<br/>         SAMUEL L. PARRISH.<br/>         LAWRENCE F. PECK, President, American Branch Société des Architectes Diplômés<br/>         J. SANFORD SALTUS.<br/>         ORMOND G. SMITH.<br/>         HENRY ALFRED TODD, Professor of Romance Philology, Columbia University, Chairman, Board of French Union.<br/>         RODMAN WANAMAKER.<br/>         JOHN I. WATERBURY.</p> |
|--|---|

## THE STANDING COMMITTEE ON EXHIBITIONS

MRS. HENRY MOTTET, Chairman.

- |  |                         |
|--|-------------------------|
| The Curators of the Museum,                    | MISS ANNA C. PELLEW.    |
| MISS CECILIA BEAUX, Sociétaire des Beaux-Arts. | MR. ARTHUR FREEDLANDER. |
| MR. OGDEN CODMAN.                              |                         |



PARIS

13 RUE de la PAIX

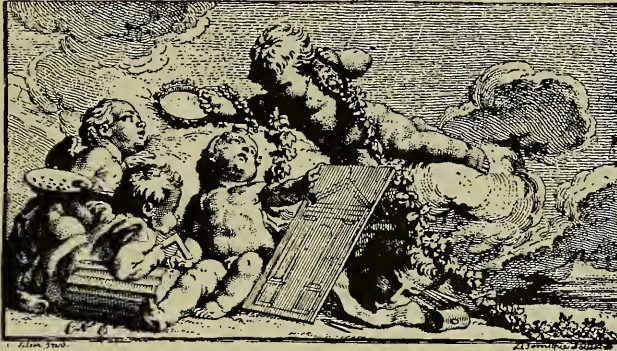
LONDON

175 NEW BOND STREET

6846  
L79  
CHM

# French Institute in the United States

MUSEUM OF FRENCH ART



## LOAN EXHIBITION FOR THE BUILDING FUND



January 14th to January 29th, 1919

CATALOGUE, 25 CENTS

N  
6846  
L79  
CHM



No. 152. Portrait of Mme. de la Porte—Jean-Marc Nattier.



# INSTITUT FRANÇAIS AUX ÉTATS-UNIS

## ARTS

Museum of French Art  
French Institute in the U. S.

## SCIENCES

Entente France-America  
Commerce, Industry and  
Science Society, Inc.

## BELLES-LETTRES

French Union  
Literature, History and  
Philosophy Ass'n.



## FOREWORD

THE Museum of French Art was founded in New York in December, 1911. It is national in its scope and was the first expression in the United States of the INSTITUT FRANÇAIS AUX ETATS-UNIS — a movement started in Paris in June, 1911, by distinguished citizens of France and the United States to promote a wider knowledge of France, her language, her literature, her sciences and her arts.

The Museum is the Art Section of the Institut Français aux Etats-Unis; its members have also the privileges of the Science Section of the "Institut" (The Entente France-America — Commerce, Industry and Science Society, Inc.) and of the Literary Section of the "Institut" (The French Union).

The "Institut" aims to be a center in the United States for those who are attracted by the French language and literature, French drama and music, French science, and by the artistic, natural and architectural beauties of France. It appeals to all those who desire to increase the economic relations between the two countries.

The Museum is making collections in the various branches of French Art (painting, sculpture, engraving, numismatics, ceramics, laces, textiles, furniture, etc.); it is assembling a reference library covering the Art, Science, Literature and History of France, and a circulating French library of fiction, etc.; it is bringing from France distinguished lecturers (through the revenues of the John Sanford Saltus Foundation); it is furnishing free of cost a practical knowledge of French Arts and Crafts and of the French language to workers; it is stimulating higher

standards in taste; it is extending a knowledge of French music and literature.

The Museum is supported entirely by voluntary contributions; it seeks large endowments; it needs gifts for its collections and an increase of membership to help defray its running expenses, to which its trustees are contributing; these expenses are rapidly increasing as its usefulness is enlarged.

The "Institut" is extending its work in large centers of the United States as fast as opportunities and its revenues will permit; it seeks the co-operation of all public-spirited citizens; it appeals to all friends of France.

The Loan Exhibition of the Arts of France which is now offered to the public contains objects from the collections of the life members of the Institute, as well as from other private collections of the City of New York, many of which have never been exhibited before. The Exhibition is for the benefit of the Institute's Building Fund. The preliminary floor plans for the Entrance and Library floors of the new building will be found in this catalogue.

---

*9 Rue de la Paix : : : : Paris*

---

ROBES, MANTEAUX  
AND FOURRURES

BOUÉ SŒURS

13 WEST 56th STREET  
NEW YORK



DISPLAY FROM 11 TO 1 AND 3 TO 5

---

*The only Rue de la Paix House in America*

---

## Autographs

1. LOUIS XV—Act of donation of the archbishopric of Lyons to sieur Charles François de Chateaufort de Rochebonne, pair de France, évêque et comte de Noyon. Signed by Louis XV at Fontainebleau, July 25, 1730.  
Gift of J. Sanford Saltus to the Museum.
2. LOUIS XVI—Nomination for commander-in-chief in Alsace of sieur baron de Flachlanden. Signed by Louis XVI at Versailles, July 24, 1788.  
Gift of J. Sanford Saltus to the Museum.
3. MARIE-ANTOINETTE—Nomination for "officier ser-deau" (royal table steward) of the Queen's household, of sieur Ferret. Signed by Marie-Antoinette, July 15, 1774.  
Gift of J. Sanford Saltus to the Museum.

## Bibelots

Period of Louis XV.

- 4 NÉCESSAIRE in "Pomponne" (copper overlaid with gold).  
Loaned by W. R. Britton, Esq.
5. ÉTUI-NÉCESSAIRE—Agate with gold mounts and diamond clasp.  
Loaned by Mr. and Mrs. Albert Blum.
6. ÉTUI—Agate with gold mounts and diamond clasp. ,  
Loaned by Mr. and Mrs. Albert Blum.
7. BOX—Carved mother-of-pearl. Gold mounts. Miniature inside cover.  
Loaned by Edmond Bonaventure, Esq.
8. ÉTUI AND BOX—Agate with gold mounts in original case.  
Loaned by Mrs. C. A. Spreckels.
9. ÉTUI-NÉCESSAIRE in silver.  
Loaned by Miss Shippen.
10. PAIR OF SMALL CRYSTAL BOTTLES—Gold mounts.  
Loaned by Edmond Bonaventure, Esq.

11. SNUFF-BOX--Amethyst with gold and diamond mounting.  
Loaned by Mrs. C. A. Sprecke's.
12. BOX in Vernis Martin—Miniature inside cover.  
Loaned by Mr. and Mrs. Albert Blum.
13. DÉVIDOIR—Gilt bronze and wood. Very rare.  
Loaned by Mrs. C. A. Spreckels.
14. SNUFF-BOX—Enamel on gold. Gold mounts and diamond clasp.  
Loaned by Mrs. C. A. Spreckels.
15. BOX AND KNIFE—Rose enamel, decoration in grisaille.  
Loaned by Mrs. William P. Douglas.
16. SET OF PLAYING CARDS.  
Loaned by Mrs. John King Van Rensselaer.
17. NEST OF FOUR BOXES FOR A GAME.  
Loaned by Mrs. John King Van Rensselaer.
18. PORTE-CARTES—Mother-of-pearl carved.  
Loaned by Mrs. James Sullivan Bowdoin.
19. BOX IN CARVED AGATE—Mountings of gold, rubies, and diamonds.  
Loaned by Thomas Hughes Kelly, Esq.

Period of Louis XVI.

20. NÉCESSAIRE—Dark blue enamel on gold. Complete set in original case.  
Loaned by Mrs. William P. Douglas.
21. BOX in Vernis Martin.  
Loaned by Mr. and Mrs. Albert Blum.
22. THREE VINAIGRETTES—Enamel.  
Loaned by Mrs. William P. Douglas.
23. SURTOUT DE TABLE—Pastoral scenes and flowers on background of white sand. Very rare.  
Loaned by Henry Symons, Esq.
24. SNUFF-BOX—Gold mounts. Paintings of flowers in gouache.  
Loaned by Mrs. C. A. Spreckels.
25. SNUFF-BOX—Enamel on gold. Medallion of carved ivory and gold mounts.  
Loaned by Mrs. C. A. Spreckels.



No. 168. Portrait of the Marquis de La Fayette—Boilly.

26. BOX—Blond shell, piqué in gold.  
Loaned by Mrs. Stanford White.
27. COLLECTION OF SNUFF-BOTTLES, in original shagreen case. XVIIIth Century.  
Loaned by Mrs. William P. Douglas.
28. SNUFF-BOX—Decorations of the school of Watteau.  
Loaned by Mrs. John Woodruff Simpson.
29. SNUFF-BOX, with mirror.  
Loaned by Mrs. John Woodruff Simpson.
30. NÉCESSAIRE—Shagreen. Fittings in silver.  
Loaned by Mr. and Mrs. Albert Blum.
31. SOUVENIR D'AMITIÉ—Ivory. With miniatures.  
Loaned by Mrs. A. Murray Young.
32. SOUVENIR D'AMITIÉ—Ivory. Miniature in grisaille on pink ground.  
Loaned by Mrs. A. Murray Young.
33. SNUFF-BOX—Tortoise shell. Miniature of Louis XVI, Marie-Antoinette and the Dauphin.  
Loaned by Mrs. A. Murray Young.

## Books

Period of Louis XV.

34. L'INVOCATION DES SAINTS—Paris, 1751. Bound for Louis XV and Marie Leczinska.  
Loaned by J. Pierpont Morgan, Esq.
35. LA PIÉTÉ DES CHRÉTIENS ENVERS LA MORT—Paris, 1719. Bound for Marie Leczinska. Arms of Louis XV and Marie Leczinska on doublures.  
Loaned by J. Pierpont Morgan, Esq.
36. L'OFFICE DE LA SEMAINE SAINTE—Paris, 1748. Bound for Mme. Adélaïde, eldest daughter of Louis XV.  
Loaned by J. Pierpont Morgan, Esq.
37. LE DIURNAL DU BRÉVIAIRE ROMAIN—Paris, 1750. Bound by Fournier of Versailles, for Mme. Victoire, daughter of Louis XV.  
Loaned by J. Pierpont Morgan, Esq.

38. NOUVELLE HISTOIRE POÉTIQUE—Paris, 1751.  
Bound for Mme. Sophie, daughter of Louis XV.  
Loaned by J. Pierpont Morgan, Esq.
39. LIVRE DE L'ÉGLISE—Paris, 1732. Bound for Mme. du Barry.  
Loaned by J. Pierpont Morgan, Esq.
40. OPERE METASTASIO—Venezia, 1733. Bound for Mme. de Pompadour.  
Loaned by J. Pierpont Morgan, Esq.
41. MARCHES ET POSITIONS DES ARMÉES. Bound for Mme. de Pompadour.  
Loaned by J. Pierpont Morgan, Esq.
42. OFFICES DE LA SEMAINE SAINTE—Paris, 1743.  
Bound by Dérome, aîné, for the Dauphin, son of Louis XV, father of Louis XVI.  
Loaned by J. Pierpont Morgan, Esq.
43. LA MORT DE NÉRON—Paris, 1703. Bound for Louis XVI when Duc de Berri.  
Loaned by J. Pierpont Morgan, Esq.
44. LES FRAGMENTS HÉROÏQUES—Bound for Louis XVI when Duc de Berri.  
Loaned by J. Pierpont Morgan, Esq.
45. SYSTÈME SOCIALE—London, 1773. Bound for Louis XVI when Dauphin.  
Loaned by J. Pierpont Morgan, Esq.

Period of Louis XVI.

46. HORACE—Paris, 1733. Bound for Louis XVI and used by him in his private library at Versailles.  
Loaned by J. Pierpont Morgan, Esq.
47. LA REINE DE GOLCONDE—Paris, 1782. Bound for Louis XVI. From his private library at Versailles.  
Loaned by J. Pierpont Morgan, Esq.
48. HISTOIRE DE MANON LESCAUT—2 vols. Paris, 1781.  
Bound for Marie-Antoinette when Duchesse de Lorraine.  
Loaned by J. Pierpont Morgan, Esq.

## Fans

Period of Louis XV.

49. FAN—Portraits surrounded by garlands of flowers.  
Loaned by Mrs. George J. Whalen.
50. FAN—Oriental scenes.  
Loaned by Mrs. George J. Whalen.
51. FAN—Portraits surrounded by cupids.  
Loaned by Edmond Bonaventure, Esq.
52. FAN.  
Loaned by De Witt Clinton Cohen, Esq.
53. FAN—Vernis Martin.  
Loaned by Mrs. Charles A. Post.
54. FAN—Painted in gouache on swanskin. Diana at the bath.  
Loaned by Mrs. A. Murray Young.

Period of Louis XVI.

55. FAN—Pastoral scene.  
Loaned by Mrs. George J. Whalen.
56. FAN—Pastoral scene.  
Loaned by Edmond Bonaventure, Esq.
57. FAN—Painted on swanskin. Pastoral subjects.  
Loaned by Mrs. A. Murray Young.

## Furniture

Period of Louis XV.

59. CANAPÉ CORBEILLE—Walnut. Covered in red and cream lampas.  
Loaned by Mrs. S. Reading Bertron.
60. DESK—Marquetry with gilt bronze mounts.  
Loaned by Mrs. C. A. Spreckels.
61. COMMODO—Black and gold lacquer. Gold mounts.  
Loaned by Felix Wildenstein, Esq.
62. CONSOLE.  
Loaned by Carlhian & Co.





No. 123. Pair of Candelabra—François Boucher.

63. TABLE-BUREAU—Gilt bronze mounts.  
Loaned by Lewis & Simmons.
64. TABLE—Green Vernis Martin, porphyry top. Gilt bronze  
mounts.  
Loaned by Mrs. James W. Lane.
65. TABLE in marquetry.  
Loaned by Mrs. William P. Douglas.
66. TABLE TAMBOUR in marquetry.  
Loaned by Mrs. William P. Douglas.
67. TABLE in marquetry.  
Loaned by Mrs. Grace R. Rogers.
68. TABLE—Kidney-shaped with book rest. From the Op-  
penheim collection.  
Loaned by Mrs. James W. Lane.
69. TABLE with drawer for writing and sliding screen. From  
the Oppenheim collection.  
Loaned by Mrs. James W. Lane.
70. SOFA, ARMCHAIR AND CHAIR—Signed Nogaret,  
1750.\* Covering of antique damask.  
Loaned by Mrs. James W. Lane.
71. CHAIR—Walnut, cane seat and back.  
Loaned by Mrs. Stanford White.
72. TABOURET DE PIANO—Covered in embroidery.  
Loaned by Mrs. W. Bayard Cutting.
73. SCREEN—Gobelin tapestry.  
Loaned by Mrs. W. Bayard Cutting.
74. CANAPÉ—Gobelin tapestry.  
Loaned by Mrs. W. Bayard Cutting.
75. FAUTEUIL.  
Loaned by Gimpel & Wildenstein.
76. CONSOLE—Carved in gilded wood.  
Loaned by Mitchell Samuels, Esq.
77. TWO FAUTEUILS—Covered with linen. Painted by hand.  
Loaned by Senator William A. Clark.
- WO FAUTEUILS—Aubusson tapestry. Signed by Car-  
pentier.  
Loaned by Mitchell Samuels, Esq.

---

\* Nogaret was a famous ébéniste of Lyons during the reign of Louis XV.

79. PETIT FAUTEUIL D'ENFANT.  
Loaned by Mrs. Adolf Ladenburg.
80. FIRE-SCREEN.  
Loaned by Thomas Hughes Kelly, Esq.
81. FAUTEUIL-CAUSEUSE—Aubusson tapestry.  
Loaned by Mr. and Mrs. Albert Blum.

Period of Louis XVI.

82. CANAPÉ "CORBEILLE"—Tapestry.  
Loaned by James Speyer, Esq.
83. ARMCHAIR—Beauvais tapestry.  
Loaned by Mrs. Charles B. Alexander.
84. HARP—Vernis Martin and gilt bronze.  
Loaned by Mitchell Samuels, Esq.
85. CHAIR—Gobelin tapestry.  
Loaned by James Speyer, Esq.
86. SECRÉTAIRE—Marquetry, gilt bronze mounts and marble top.  
Loaned by James Speyer, Esq.
87. TABLE "TAMBOUR"—Marquetry and bronze. Very rare.  
Loaned by Mr. and Mrs. Albert Blum.
88. TABLE—Gilt bronze mounts. Medallions in Porcelaine de Sèvres.  
Loaned by James Speyer, Esq.
89. TABLE in marquetry. Unusual in form and style.  
Loaned by Mrs. William P. Douglas.
90. SMALL FAUTEUIL—Frame in carved and painted wood. Covering in petit point made by the Marquise de La Fayette. Fauteuil presented by her to Mrs. John Jay, wife of the American commissioner for treaty of Paris in 1783.  
Loaned by Banyer Clarkson, Esq.
91. FAUTEUIL — Aubusson tapestry, signed J. F. M. Langon, 1769.  
Loaned by Mrs. John A. Logan, jr.
92. TWO FAUTEUILS—Aubusson tapestry.  
Loaned by Mitchell Samuels, Esq.

- 93 FAUTEUIL.  
Loaned by Mrs. John King Van Rensselaer.
94. SMALL TABLE—Marquetry.  
Loaned by Mrs. George J. Whelan.
- 95 ENCOIGNURE—Marquetry, with ormoulu mounts. From collection of Mrs. Swan of Boston.  
Loaned by Richard Codman, Esq.

## Jewelry

Period of Louis XV.

96. CŒUR DE MALINES—Silver, gold and black diamonds.  
Loaned by Mrs. Charles Berg.
97. RING—Sapphire and diamonds.  
Loaned by Mrs. Charles Berg.
98. SHOE BUCKLES—Silver and rhinestones. Original case.  
Loaned by Mrs. James W. Lane.
99. GOLD SHOE BUCKLE set with pearls.  
Loaned by Mrs. Charles Berg.
- 100 BUCKLES—Rhinestones.  
Loaned by Mrs. Charles Berg.

Period of Louis XVI.

101. CORONET in diamonds.  
Loaned by Mrs. William P. Douglas.
102. NECKLACE, enamel and pearls.  
Loaned by Mrs. William P. Douglas.
103. PENDANT—Pearls and garnets.  
Loaned by Mrs. Charles Berg.
104. RING BOUQUET—Emeralds, rubies, diamonds.  
Loaned by Mrs. Charles Berg.
105. STOMACHER in diamonds.  
Loaned by Mrs. William P. Douglas.
- 106 BRITTANY CLASPS in silver.  
Loaned by Mrs. Charles Berg.
107. SILVER BUCKLE—Cupids.  
Loaned by Mrs. Charles Berg.



No. 136. Clock. Period of Louis XVI.



No. 226. Arms of Louis XV. Beauvais Tapestry.  
Design by Boucher.



No. 61. Commode Louis XV.

108. RHINESTONE BUCKLE.  
Loaned by Mrs. Charles Berg.
109. PAIR OF RHINESTONE BUCKLES.  
Loaned by Mrs. Charles Berg.
110. NECKLACE—Rose diamonds, set in silver  
Loaned by Ogden Codman, Esq.

## Lace and Embroidery

Period of Louis XV.

111. BARBE—Point d'Alençon.  
Loaned by Mrs. George J. Whelan.
112. MAN'S COSTUME in silk and embroidery.  
Loaned by Mrs. George J. Whelan.
113. TWO PIECES OF SILVER LACE.  
Loaned by Thomas Hughes Kelly, Esq.
114. FLOUNCE—Point d'Argentan.  
Loaned by Mrs. George J. Whelan.
115. FLOUNCE—Point d'Alençon.  
Loaned by Mrs. George J. Whelan.
116. PURSE—Petit point.  
Loaned by Mr. and Mrs. Harry Markoe.

Period of Louis XVI.

117. BABY DRESS and BABY CAP.  
Loaned by Mrs. De Witt Clinton Cohen.
118. EMBROIDERED HANDKERCHIEF.  
Loaned by Mrs. De Witt Clinton Cohen.
119. BOBBINS WOUND WITH GOBELIN WOOL.  
Loaned by Mrs. De Witt Clinton Cohen.
120. COSTUME, worn by Mr. John Gerard Coster on his presentation at the court of Louis XVI.  
Loaned by Mrs. John C. Wilmerding.
121. WALLET with gold clasp and miniature.  
Loaned by Mr. and Mrs. Albert Blum.
122. TWO PANELS with medallions surrounded with flowers, designed by Philippe de la Salle. Woven in Lyons.  
Loaned by Mitchell Samuels, Esq.



## Marbles and Bronzes

Period of Louis XV.

123. PAIR OF CANDELABRA—Gilt bronze. Figures in soft paste, Sèvres porcelain, modelled by François Boucher.  
Loaned by Thomas Pearsall Thorne, Esq.

124. PAIR OF CANDELABRA—Gilt bronze. Modelled about 1770 by Martineourt, the master of Gonthière. From the collections of Sir Richard Wallace and Sir John Murray Scott.

Loaned by Wareham Harding, Esq.

125. COUPE in agate. Mounted in gilt bronze. Ornamented with small flowers in soft paste.

Loaned by Miss Margaret B. Gould.

126. PAIR OF CELADON VASES—Gilt bronze mounts.

Loaned by Lewis & Simmons.

127. JAR in powder-blue Chinese porcelain. Mounts by Gonthière.

Loaned by Mrs. Orme Wilson.

128. MARBLE MANTEL.

Loaned by Miss Diane del Monte.

129. SMALL WALL CLOCK—Gilt bronze.

Loaned by Mrs. W. Bayard Cutting.

130. APPLIQUES—Gilt bronze. Flowers in soft paste porcelain.

Loaned by Mitchell Samuels, Esq.

131. STATUETTE OF LOUIS XV.

Loaned by Mrs. William A. Clark.

Period of Transition.

132. CLOCK—Gilt bronze. Model by Delafosse. From the Kann collection.

Loaned by James Speyer, Esq.

Period of Louis XVI.

133. PAIR OF CANDELABRA—Gilt bronze. Figures in dark bronze.

Loaned by James Speyer, Esq.

134. PAIR OF BRONZE CANDLESTICKS.

Loaned by Mrs. James W. Lane.

135. PAIR OF CASSOLETTES—White marble and gilt bronze.

Loaned by Edmond Bonaventure, Esq.

136. CLOCK—Gilt bronze and marble.  
Loaned by Mrs. McDougall Hawkes.
137. CLOCK—Marble and gilt bronze. Brought to the United States during the reign of Louis XVI.  
Loaned by Miss Shippen.
138. MARBLE MANTEL.  
Loaned by Carlhian & Co.
139. CLOCK—Marble and gilt bronze.  
Loaned by Mrs. Stanford White.
140. GROUP "FATHER TIME"—Bronze with dark patine.  
Loaned by James Speyer, Esq.
141. SMALL MARBLE GROUP—Base of porphyry and gilt bronze. Attributed to Pajou.  
Loaned by Warwick House.
142. MARBLE MANTEL.  
Loaned by Carlhian & Co.
143. CLOCK—Gilt bronze. Medallions in enamel. Revolving face.  
Loaned by Mrs. W. Bayard Cutting.
144. ANDIRONS—Fire gilt. From collection of Mrs. Swan of Boston.  
Loaned by Franklin Haven Sargent, Esq.
145. PAIR OF CANDLESTICKS—Ormoulu.  
Loaned by Mrs. F. Gray Griswold.
146. PAIR OF BRONZE STATUETTES—By Falconet (1716-1791). Two statuettes in gilt bronze representing Fragility and Cupid.  
Loaned by Senator William A. Clark.
147. STATUETTE VENUS AND CUPID—By Falconet (1716-1791). From J. Pierpont Morgan collection.  
Loaned by Senator William A. Clark.

### Miniatures

Period of Louis XV.

148. TWO MINIATURES—Gold frames.  
Loaned by Mrs. William P. Douglas.

Period of Louis XVI.

149. LOUIS XVI, MARIE-ANTOINETTE, THE DAUPHIN AND THE PRINCESSE ROYALE—Costumes of the Trianon laiterie. In one frame.  
Loaned by Edmond Bonaventure, Esq.



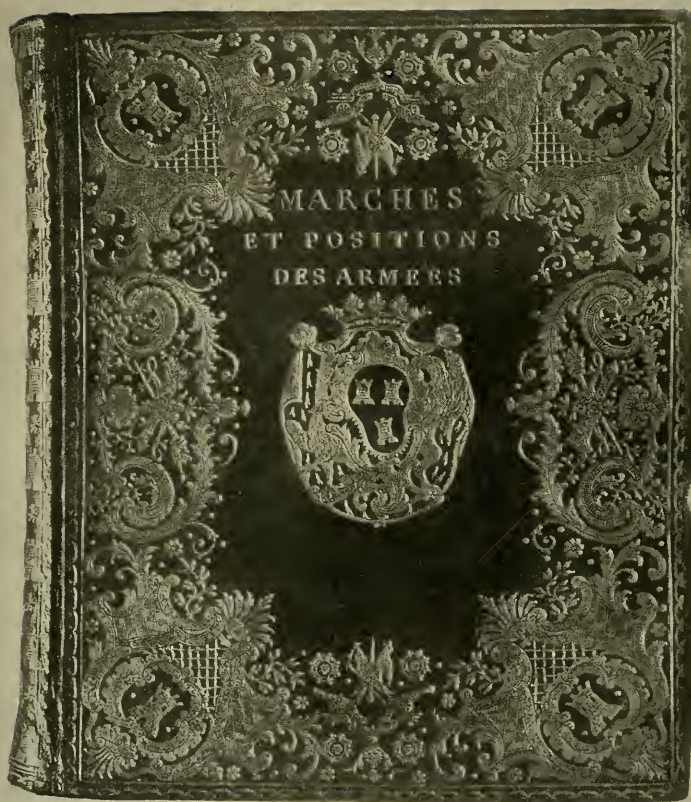
No. 83. Armchair. Beauvais Tapestry. Louis XVI.

150. PORTRAIT OF ST. JUSTE—By ———  
Loaned by Thomas Hughes Kelly, Esq.
151. LANDSCAPE in manner of Lancret.  
Loaned by Thomas Hughes Kelly, Esq.

## Paintings

Period of Louis XV.

152. PORTRAIT OF MME. DE LA PORTE, née Caumartin—  
By Jean-Marc Nattier (1686-1766). Signed and dated 1752.  
Collection of Comte Lariboisière.  
Loaned by James Speyer, Esq.
153. PORTRAITS in pastel—By Noël Nicholas Coppel (1690-  
1734).  
Loaned by Duveen Bros.
154. PORTRAIT OF A DAUGHTER OF LOUIS XV—By  
Alexis Simon Belle (1674-1734).  
Loaned by F. Kleinberger, Esq.
155. LA MUSIQUE—By François Boucher (1704-1773).  
Loaned by Roland Knœdler, Esq.
156. TWO PANELS—Pastoral scenes by François Boucher  
(1704-1773).  
Loaned by Mrs. Charles B. Alexander.
157. LA BONNE MÈRE—By François Boucher (1704-1773).  
Loaned by Mrs. John Woodruff Simpson.
158. PORTRAIT OF A MAN—Pastel. By Jean-Baptiste Per-  
ronneau (1715-1783).  
Loaned by Mrs. James W. Lane.
159. PORTRAIT OF A LADY—Pastel. By de la Tour (1704-  
1788).  
Loaned by Mrs. James W. Lane.
160. DESSIN A DEUX CRAYONS—By Portail.  
Loaned by Mrs. M. Orme Wilson.
161. TWO PORTRAITS—Water color. By Carmontel.  
Loaned by Mrs. M. Orme Wilson.
162. LANDSCAPE—Gouache.  
Loaned by Mr. and Mrs. Albert Blum.
163. PANEL OF PAINTED SILK forming the valence of a  
pair of curtains. From the château of Choisy-le-Roi. At-  
tributed to Le Prince.  
Loaned by Miss Margaret B. Gould.



No. 41. Marches et Positions des Armées.  
Bound for Mme. de Pompadour.

164. TWO PAINTINGS—Pastoral scenes. XVIIIth Century.  
French school.  
Loaned by Mrs. James W. Lane.
- Period of Louis XVI.
165. COLISEUM—Water-color. By Hubert Robert (1733-1808).  
Loaned by Mrs. James W. Lane.
166. L'INONDATION—By Hubert Robert (1733-1808).  
Loaned by James Speyer, Esq.
167. PORTRAIT OF THE COMTESSE DE PROVENCE—By  
Vigée le Brun (1755-1842).  
Loaned by Felix Wildenstein, Esq.
168. PORTRAIT OF THE MARQUIS DE LA FAYETTE—  
By Boilly (1761-1845).  
Loaned by F. Kleinberger, Esq.
169. GARDEN SCENE—Painted on kid.  
Loaned by Mrs. W. Bayard Cutting.
170. MARINE—By Joseph Vernet (1714-1789).  
Loaned by Dr. Forbes Hawkes.
171. GIRL'S HEAD—By Jean-Baptiste Greuze (1725-1805).  
Loaned by Charles M. Bull, Esq.
172. LA LAVEUSE—By Jean-Baptiste-Siméon Chardin (1693-  
1779).  
Loaned by Senator William A. Clark.
173. FÊTE CHAMPÊTRE—By Jean-Baptiste-Joseph Pater  
(1695-1736).  
Loaned by Richard Codman, Esq.
174. LE PREMIER BAISER—By Jean-Honoré Fragonard  
(1732-1806).  
Loaned by Mr. and Mrs. S. Reading Bertron.
175. LA BONNE MÈRE—By Jean-Honoré Fragonard (1732-  
1806).  
Loaned by Mr. and Mrs. S. Reading Bertron.

### Porcelain

Period of Louis XV.

176. TOBACCO JAR—Chantilly (factory existed 1725-1800).  
Silver mounts. Régence. Soft paste.  
Loaned by Mrs. William P. Douglas.
177. BOX—Chantilly. Soft paste.  
Loaned by Edmond Bonaventure, Esq.

178. TWO FIGURES—Chantilly. Soft paste. Mounted as  
scent bottles. Set with diamonds. In original cases. Unique.  
Loaned by Mrs. William P. Douglas.
179. PLAT—Chantilly.  
Gift of Mme. L. Marcel, Paris, to the Museum.
180. KNIFE HANDLES—Chantilly. Soft paste.  
Loaned by Miss Margaret B. Gould.
181. SMALL GROUP—Mennecey. (Factory existed 1734-7773.)  
Soft paste.  
Loaned by Edmond Bonaventure, Esq.
182. TWO SMALL VASES—Biscuit de Mennecey.  
Gift of M. et Mme. S. Lion, Paris, to the Museum.
183. POT A CRÈME—Mennecey.  
Gift of Mme. Gilbert Levy to the Museum.
184. KNIFE HANDLES—Mennecey.  
Loaned by Miss Margaret B. Gould.
185. CUP AND SAUCER ON THEIR TRAY—Mennecey. Rare  
decoration. Soft paste.  
Loaned by Mrs. William P. Douglas.
186. PAIR OF CACHEPOTS—Mennecey. Soft paste.  
Loaned by Mrs. William P. Douglas.
187. PLATE—Faïence de Rouen (1756). Decorated by Guille-  
baud.  
Gift of Miss Margaret B. Gould to the Museum.
188. PLATE—Faïence de Rouen (1757).  
Gift of Miss Margaret B. Gould to the Museum.
189. TEAPOT—Sèvres. Soft paste. Mark "F" for year 1758.  
Decorator, Wernal.  
Gift of Mrs. McDougall Hawkes to the Museum.
190. INDIVIDUAL COFFEE SET—Sèvres. Soft paste (1764).  
Loaned by Edmond Bonaventure, Esq.
191. ROSE-WATER BOWL AND JUG—Sèvres. Soft paste  
(1767). Gilding by Grison.  
Loaned by Edmond Bonaventure, Esq.
192. TWO STATUETTES—Biscuit de Sèvres. Soft paste.  
Loaned by Mrs. William P. Douglas.
193. CENDRIER—Sèvres. Soft paste. (About 1765.)  
Gift of Mrs. McDougall Hawkes to the Museum.

194. TWO STATUETTES—Biscuit de Sèvres. Model by François Boucher.  
Loaned by Mrs. A. J. Drexel Biddle, jr.
195. ROSE-WATER COVER AND DISH—Sèvres. Soft paste. Mark, the royal cipher; date letter "C" for year 1756. Design taken from silver cover and dish by the silversmith Germain. Described in the Livre de ventes of 1756, with value: "Une cuvette à fleurs Roussel, 480 livres. Broc Roussel, 1<sup>re</sup> grandeur, fleurs, 244 livres." Presented in 1762 by Louis XV to John (Russell) 4th Duke of Bedford, special envoy to conclude Treaty of Paris (end of 7 years' war). From the collection of Caroline (née Russell), dowager Duchess of Abercorn.  
Loaned by Wareham Harding, Esq.
196. CUP AND SAUCER—Sèvres. Soft paste. Mark "A," for year 1753. Decorator, Parpette. From collection of dowager Duchess of Abercorn.  
Gift of Mrs. McDougall Hawkes to the Museum.
197. ÉCUELLE, cover and stand—Sèvres. Soft paste. Mark, the royal cipher; date, letter "M" for year 1765. Decorator, Chapuis. Collection of Earl of Lonsdale.  
Loaned by Wareham Harding, Esq.
198. PAIR OF VASES—Vincennes. Soft paste. Gilt bronze mounts (1738-1756).  
Loaned by E. C. Hodgkins, Esq.
199. PAIR OF VASES—Sèvres. Mounts Louis XV.  
Loaned by George and Florence Blumenthal.

Period of Louis XVI.

200. INDIVIDUAL COFFEE SET—Clignancourt (Factory existed in Paris, 1771-1798). Hard paste.  
Loaned by Edmond Bonaventure, Esq.
201. CUP AND SAUCER—Faïence de Marseilles. XVIIIth Century.  
Gift of Mrs. McDougall Hawkes to the Museum.
202. PLATE—Nidervillier (Factory existed 1780-1793). Period of Comte de Custine.  
Gift of Miss Margaret B. Gould to the Museum.
203. INDIVIDUAL COFFEE SET—Porcelaine à la Reine (Factory existed in Paris, 1775-1797). Hard paste.  
Loaned by Edmond Bonaventure, Esq.

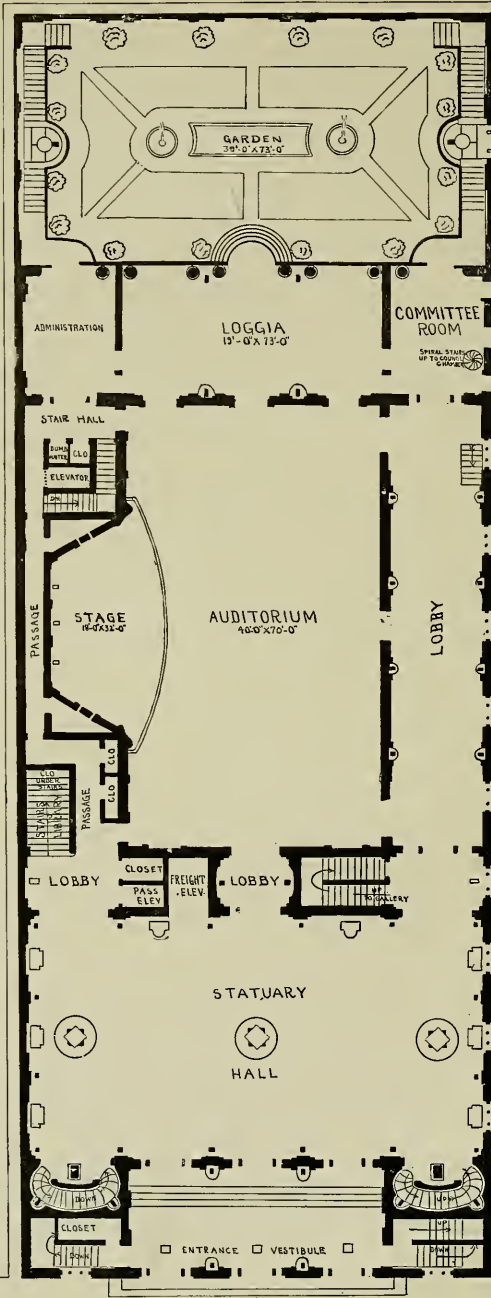


204. CUP AND SAUCER—Porcelaine à la Reine.  
Gift of M. Emile Parès to the Museum.
205. PAIR OF VASES—Porcelaine à la Reine. Gilt bronze  
mounts.  
Loaned by Miss Margaret B. Gould.
206. INDIVIDUAL TEA SET—Sèvres. Soft paste. From the  
Massy-Mainwaring collection.  
Loaned by Mrs. James W. Lane.
207. CUP AND SAUCER—Sèvres. Soft paste.  
Gift of Mrs. McDougall Hawkes to the Museum.
208. CUP AND SAUCER—Sèvres. Soft paste. Stock pattern.  
Cup, 1772. Saucer, 1775.  
Gift of Mrs. McDougall Hawkes to the Museum.
209. STATUETTE "GARDE A VOUS"—Biscuit de Sèvres.  
Soft paste. Base of decorated Sèvres.  
Loaned by Mrs. A. J. Drexel Biddle, jr.
210. COFFEE CUP AND SAUCER—Sèvres. Soft paste. Mark  
"J J" for year 1787. Decorator, Tallandier.  
Gift of Mrs. McDougall Hawkes to the Museum.
211. STATUETTE—Sèvres. Soft paste. By Falconet (1716-  
1791).  
Gift of Mrs. McDougall Hawkes to the Museum.
212. TUREEN, Compagnie des Indes—Decorated after French  
designs with the arms of the Marquise de ——  
Loaned by Mrs. Stanford White.
213. COLLECTION OF SEALS in various forms, in soft pastes  
and enamels. Periods of Louis XV and Louis XVI.  
Loaned by Mrs. William P. Douglas.

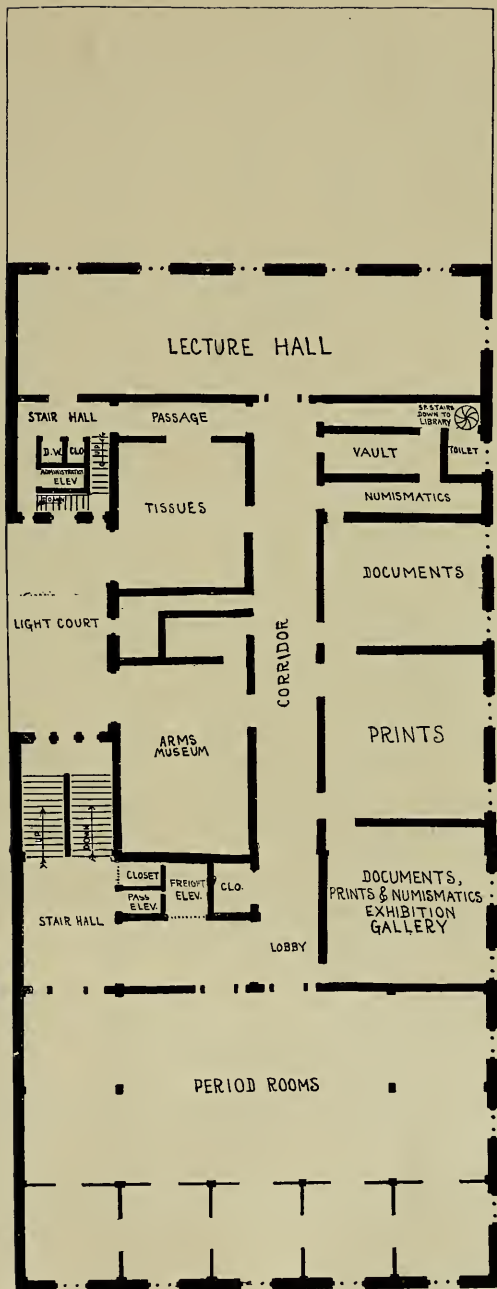
## Silver

Period of Louis XV.

214. RAGOUT DISH—Made in Paris in 1732. Marked with the  
poinçon de décharge of Hubert Louvet, sous-fermier (1732-  
1738).  
Loaned by Albert A. Southwick, Esq.
215. SPOONS AND FORKS—Statue handles, bowls and prongs  
modern, copied from same in Musée de Cluny, Paris.  
Loaned by Mrs. Charles A. Post.
216. TWO WATCH-CASES.  
Loaned by Mrs. James Sullivan Bowdoin.



COPYRIGHT 1918 by  
 MUSEUM OF FRENCH ART  
 FRENCH INST. IN  
 THE UNITED STATES



COPYRIGHT 1915, by  
 MUSEUM OF FRENCH ART,  
 FRENCH INSTITUTE IN  
 THE UNITED STATES.

DECORATIVE ARTS FLOOR.

Period of Louis XVI.

217. BOUGIE DE POCHE.  
Loaned by Mrs. John King Van Rensselaer.
218. SMALL VASE.  
Loaned by Mrs. John King Van Rensselaer.
219. TWO ALTAR VASES.  
Loaned by Mrs. John C. Wilmerding.
220. COFFEE POT, with typical three feet and side handle.  
Made in Paris, 1787. Marked with poinçon de décharge of  
Fermier Henri Clavel.  
Loaned by Albert A. Southwick, Esq.
221. PLATTER SPOON—Made in Paris, 1787. Marked with  
poinçon de charge and poinçon de décharge of Fermier  
Henri Clavel.  
Loaned by Albert A. Southwick, Esq.
222. SIX SILVER FORKS—Made in Paris in 1782. Marked  
with poinçon de charge and poinçon de décharge of  
Fermier Henri Clavel.  
Loaned by Albert A. Southwick, Esq.
223. SUGAR SIFTER—Plated.  
Loaned by Ogden Codman, Esq.
224. VEGETABLE DISH—Silver. Work of Henri Clavel, of  
Paris.  
Loaned by Richard Codman, Esq.

## Tapestries

Period of Louis XV.

225. SUBJECT AFTER TENIERS—Woven at Lille by Guil-  
laume Werniers.  
Loaned by Mrs. James W. Lane.
226. ARMS OF LOUIS XV—Beauvais. Design by Boucher.  
Loaned by Mitchell Samuels, Esq.
227. THE BANQUET—From the series of Daphnis and Chloé.  
Gobelin. Design by Etienne Jeurat (1699-1789).  
Loaned by Mitchell Samuels, Esq.
228. RUG IN SAVONNERIE.  
Loaned by Mitchell Samuels, Esq.

Period of Louis XVI.

229. FIRE-SCREEN—Panel of ——— tapestry.  
Loaned by James Speyer, Esq.
230. FIRE-SCREEN—Beauvais tapestry. Frame, modern.  
Loaned by Mrs. William P. Douglas.

## Terra-cotta

Period of Louis XVI.

231. STATUETTE OF A BACCHANTE—By Clodion (1738-1814).  
Loaned by Thomas Pearsall Thorne, Esq.
232. BAS-RELIEF—By Clodion (1738-1814).  
Loaned by Mrs. John Woodruff Simpson.
233. PORTRAIT-BUST OF SABINE HOUDON—By Houdon (1741-1828).  
Loaned by Thomas F. Ryan, Esq.
234. MEDALLION OF BENJAMIN FRANKLIN—By Jean-Baptiste Nini (1717-1786).  
Loaned by Ogden Codman, Esq.

## Wood-carving

Period of Louis XV.

235. FRAME, ARMS AND MONOGRAM OF MARIE LECZINSKA.  
Loaned by Miss Angelica Church.

Period of Transition.

236. TWO PEDESTALS—After designs by Delafosse.  
Loaned by Mitchell Samuels, Esq.

ESTABLISHED



1723

*Compliments of*

*Revillon Frères*

*Furs*

*5<sup>th</sup> Avenue at 53<sup>rd</sup> St.  
New York*

*Paris, 81 Rue de Rivoli London, 180 Regent St.*

## For the Public and for Members of the Museum :

Free evening courses in the French language (see Special Circular).

Free technical competitive courses for salesmen, designers, artisans, etc. (French art applied to Industry—see special circular on tapestry, bookbinding, etc.)

Prizes, medals, etc. in the Schools and Universities of the United States, for proficiency in French, French Art, etc.

---

## For Members of the Museum :

### Privileges

*Conférences* in French by distinguished visitors—morning, afternoon and evening.

*Causeries* and *Cours* for advanced students in French.

Drama.

Concerts of French music.

Gallery, exhibitions of French Art, — permanent collections.

Library. — French, reference and circulating. — Documents.

Reading Room — Important periodicals of France.

Views of private collections.

Bulletin, illustrated — Accessions to Museum, *Revue Bibliographique* of French books as they appear; notes from Paris, etc., etc.

---

Members of the Art Section of the "Institut" (Museum of French Art) have the right to attend all lectures, functions, etc., of the Science and Belles-Lettres Sections of the "Institut."

Members will be admitted to Lectures and Exhibitions on presentation of their membership cards for public lectures, etc., all classes of members may obtain extra admission-tickets. For members' lectures, exhibitions, etc.: Patrons, Perpetual Fellows, Life as well as Fellowship and Sustaining Members, have at their disposal, free of charge, for each lecture, one extra admission-ticket (yellow) for 2 persons.

Members who pay dues annually of \$10 have at their disposal extra admissions for their friends upon payment, for each admission ticket for each lecture, exhibition, etc., of one dollar for the benefit of the Library Fund. There will be two classes of tickets for extra admissions for the benefit of the Library Fund:

1st — *Pink* tickets which members may send to non-members and for which members will be charged one dollar for each ticket for the benefit of the Library Fund. Each month bills will be rendered to members for all pink tickets presented. Each pink ticket admits 2 persons.

2nd — *Blue* tickets which members may send to non-members and which will entitle bearer to admission upon payment by bearer of one dollar for the benefit of the Library Fund. Each blue ticket admits 2 persons.

No yellow, pink or blue ticket will be of any validity until signed by the member who gives it out.

Each member may issue any number of pink or blue tickets for each lecture, etc., not exceeding ten. Additional books of yellow, pink and blue tickets may be had on application. All extra admissions are subject to the seating capacity of the auditorium.

---

## Departments of the Museum

Lectures: (John Sanford Salsus Foundation).

Library: Reference Division.

Circulating Division (Eliza Forbes Hawkes and

W. Wright Hawkes Memorial Foundation).

Reading Room Division (Periodical Fund Foundation).

Ceramics, Enamels: Miss Margaret B. Gould, Curator.

Laces: Mrs. Charles B. Alexander, Curator.

Documents: David Gardiner, Curator.

Prints: McDougall Hawkes, Curator.

Muniments: Henry Alfred Todd, Curator.

Numismatics: Edward T. Newell, Curator.

Paintings: Mrs. Henry Mottet, Curator.

Sculpture: Miss Anna V. Hyatt, Curator.

Arrangements: Mrs. Ladenburg, Curator.

Textiles: Mr. Harry Wearne, Curator.

Genealogy and Biography. — Franco-Americana. —

Military Art. — Wood Work. — Philately. —

Art Casting. — Art Printing. — Costume. —

Drawings, Water-Color, Gouaches. — Fur-

niture. — Miniatures. — Drama. — Music.

Tapestry and Stuffs. — Maps and Charts. —

Architecture. — Archeology. — Metal Work.

Modeling. — Ivories. — Precious Metal Work.

Art Binding. — Publications.

Exhibitions: The Curator of the Dept. of Paintings, ex-officio, Curator.

Archives: The Chairman of the Board of Trustees of the Museum of French Art, ex-officio, Curator.

Departments are added as new foundations or other circumstances may warrant.

The curator of each department is ex-officio director of each free technical course which may be attached to the department (see Appendix D).

For further details concerning Foundations, see Appendix E.

# Recent Programmes 1918-1919

## Conférences Générales

- November 9, 1918—Mr. Reginald L. McAll, Overseas Y. M. C. A. Secretary—*The Life of a French Soldier.*
- November 12, 1918—Mr. André Chéradame—*La Guerre et la Question de l'argent.*
- November 21, 1918—Raphaël D'Amour, M. A.—*Les Nouveaux Livres.*
- November 26, 1918—Raphaël D'Amour, M. A.—*Les Nouveaux Livres.*
- December 10, 1918—Mademoiselle M. Marfaing, Agrégée de l'Université, Professeur au Lycée de Jeunes Filles à Bordeaux—*Le Vieux Bordeaux: La Ville Gallo-Romaine, le Moyen Age et le XVIII<sup>e</sup> Siècle.*
- December 17 and December 19, 1918—Raphaël D'Amour, M. D.—*Les Nouveaux Livres.*
- January 2, 1919—Prof. Ferdinand Baldensperger, of the Sorbonne—*Faits divers et d'actualité: "Autour du Congrès de la Paix."*
- January 7, 1919—Lieutenant de Wierzbicki, Attaché au Corps des Interprètes, Membre du Haut Commissariat de France aux Etats-Unis.—*La France Pendant et après la guerre.*

## Musique

- November 5, 1918—Carlo Liten, the eminent Belgian Tragedian, assisted by Margaret Hall, Soloist—*Dramatic and Song Recital.*
- November 16, 1918—Mr. Charles Koechlin, of the French Government Educational Mission.—*Lecture-Recital: Modern French Music.*

## Réceptions

- November 14, 1918—*Réception* par le Comité de la Statue de Jeanne d' Arc à New York et l'Institut Français aux Etats-Unis, à l'occasion de la visite de Monseigneur Louis Julien, Evêque d'Arras, Monseigneur Alfred Baudrillart, Membre de l'Académie Française, Président de l'Institut Catholique de Paris, et les Membres de la Mission Française.

COMPLIMENTS OF

F. KLEINBERGER GALLERIES, Inc.

725 FIFTH AVENUE

NEW YORK



*To the Chairman of the Board of Trustees,  
 Museum of French Art, French Institute in the U. S.,  
 599 Fifth Avenue, New York City.*

The undersigned will be glad to become a ..... member  
 of the above institution.

Name .....  
 (Please write clearly)

P. O. Address for all notices.....

Telephone No. ....

Date.....

ENCLOSED IS REMITTANCE FOR.....

Member's Dues payable annually (applied to General Expense Fund).....	\$10.00
Sustaining member's dues, payable annually.....	25.00
Applied as follows: Gen. Exp. Fd., \$10; Endowment Fd., \$10; Library Fd., \$5.	
Fellowship member's dues, payable annually.....	50.00
Applied as follows: Gen. Exp. Fd., \$10; Endowment Fd., \$20; Library Fd., \$10; Purchase Fd., \$10.	
Life member's fee .....	100.00
Perpetual fellow's contribution, in the value of.....	1,000.00
Patron's contribution, in the value of.....	5,000.00
(Patrons have a privilege of perpetual fellowship.)	

Attention is called to the advantages of Life Membership (see "Privileges of Members of the Museum").

Life members, perpetual fellows, and patrons are exempt from all annual dues; their membership fees and contributions become part of the permanent endowment funds of the Museum; they have the privilege of establishing memorial memberships (see special circular).

Sustaining members become life members after 10 years — annual dues then cease. Fellowship members become life members after 5 years — annual dues then cease.

*(Check to be made payable to the "Treasurer of the MUSEUM OF FRENCH ART")*  
*1st year's dues must accompany acceptance of Membership, except in the case of Sustaining, Fellowship, Life Members, Perpetual Fellows and Patrons.*

(A member's fiscal year begins with the month the first day of which is nearest the date of application for membership.)

Life members are eligible to be elected perpetual fellows or patrons whenever their contributions aggregate \$1,000 or \$5,000 in value, respectively.

All classes of members are elected by the Trustees.

*Persons not already members of the Museum of French Art who desire to become members may fill in the above application, detach this page, and forward same by mail, or present it at the Museum.*

THE MUSEUM OF FRENCH ART,  
FRENCH INSTITUTE IN THE UNITED STATES.

RECEIVES

Endowments, (annuities, securities, lands, life estates, income and gifts of money) to be applied to general or specific purposes (whether principal or income), as may be designated by the donor; and  
Gifts, deposits and loans of objects of all kinds,—that come within the scope of the Institute. (See RULES.)

---

FORM OF BEQUEST OR DEVISE.

I do hereby give, grant, devise and bequeath to the MUSEUM OF FRENCH ART, FRENCH INSTITUTE IN THE UNITED STATES, in the City of New York, N. Y.

.....

.....

(Devises or bequests may be made of land, securities, income, money and books, paintings, sculpture, as well as other objects of art, collections, etc.—see “Departments of the Museum.”)

**THE INSTITUTE IS IN NEED OF LARGE ENDOWMENTS TO INCREASE ITS PUBLIC-SPIRITED EDUCATIONAL WORK THROUGH THE MUSEUM OF FRENCH ART.**

For details of the Institute’s extended eleemosynary work other than its educational activities hereinbefore referred to, enquire of the Chairman of the Board of Trustees of the Museum of French Art. (See Appendix C.)

## Bibelots

- 237—BOX—Shell, with miniature. Louis XVI  
Loaned by Mrs. Egerton L. Winthrop.
238. BOX—Shell, with miniature. Louis XVI  
Loaned by Mrs. Egerton L. Winthrop.
239. NÉCESSAIRE—Shagreen. Fittings in gold. Louis XVI  
Loaned by Mrs. Egerton L. Winthrop.

## Books

240. ORIGINES DES LANGUES, with arms of Mme. de Pompadour.  
Loaned by Mrs. Egerton L. Winthrop.

## Fans

241. FAN given to the ladies of the Court on the occasion of the marriage  
of the Duc de Bourgogne. Louis XV  
Loaned by Thomas Hughes Kelly, Esq.

## Furniture

242. BONHEUR DU JOUR—Marquetry. Louis XV  
Loaned by Mrs. Egerton L. Winthrop.
243. FIRE-SCREEN—Embroidered Satin. Louis XV  
Loaned by Thomas Hughes Kelly, Esq.
244. FIRE-SCREEN—Painted. Louis XVI  
Loaned by Mrs. Egerton L. Winthrop.
245. CONSOLE—Mahogany and ormoulu. Signed by Weisweiler and made  
for the Duchesse d'Angoulême. Louis XVI  
Loaned by Emile Rey, Esq.
246. COMMODE—Mahogany and ormoulu. Signed by Gilbert. Collection  
of the Comte de Goulaine. Louis XVI  
Loaned by Emile Rey, Esq.
247. TABLE—Oval. Louis XVI  
Loaned by Mrs. Egerton L. Winthrop.

## Jewelry

248. SHOE BUCKLES—Rhinestones. Louis XVI  
Loaned by E. Coster Wilmerding, Esq.

## Brocades

249. ALTAR FRONTAL—Gold and silver thread. Louis XV  
Loaned by Mrs. Edward Robinson.
250. BROCADE—Gold and silver thread. Louis XV  
Loaned by Mrs. Edward Robinson.

## Miniatures

251. MINIATURE OF MR. JOHN GERARD COSTER. Louis XVI  
Loaned by his grand-daughter, Mrs. John C. Wilmerding.
252. MINIATURE. Louis XVI  
Loaned by Mrs. Egerton L. Winthrop.
- Correction of No. 150.  
PORTRAIT OF ST. JUST—By Rouvier. Louis XVI  
Loaned by Thomas Hughes Kelly, Esq.

## Paintings

253. THE ALLEGORY OF PAINTING—By Jean-Louis-François Lagrenée  
(1724-1803).  
Loaned by Demotte.
254. PORTRAIT OF OLD LADY—By Jean-Baptiste Perronneau (1715-  
1783). Louis XV  
Loaned by Demotte.

## Porcelain

255. MUSTARD POT—Sèvres. Soft paste. Louis XV  
Loaned by Mrs. Egerton L. Winthrop.
256. BOX—Menecy. Louis XV  
Loaned by Mrs. Egerton L. Winthrop.
257. BOX—Menecy. Louis XV  
Loaned by Mrs. Egerton L. Winthrop.
258. GARNITURE DE CHEMINÉE. Louis XVI  
Loaned by Thomas Hughes Kelly, Esq.

## Tapestry

259. GOBELIN representing America. After designs by Desportes.  
Loaned by Demotte. Louis XV
260. RUG—Aubusson. Louis XVI  
Loaned by Miss Diane del Monte.

## Terra-Cotta

261. BUST—French. 18th Century.  
Loaned by Mrs. Egerton L. Winthrop.
262. BABY SHOES BELONGING TO JEAN-JACQUES ROUSSEAU—  
Bought from one of his descendants.  
Loaned by Mrs. De Witt Clinton Cohen.

*Compliments of*  
CHARLES  
*of*  
London

*(Established 1846)*

M. KNOEDLER & CO.

High Class Paintings by Modern and Old Masters

Select Water Color Drawings

Old and Modern Etchings and Engravings

Old English Mezzotints and Sporting Prints

Competent Restoring

Artistic Framing

LONDON  
15 Old Bond Street

PARIS  
17 Place Vendôme

NEW YORK  
556-558 Fifth Avenue

**DREICER & CO INC.**

*Jewels*

FIFTH AVENUE AT FORTY-SIXTH  
NEW YORK

**E. DREYFOUS**

582 FIFTH AVENUE  
NEW YORK

Usual Exhibition of  
Fine Needlework Furniture

LONDON

PARIS

PARISH-WATSON & CO INC.

*Old Chinese Porcelains*

SPECIAL EXHIBITION OF  
EARLY CHINESE WARES

ENTRANCE THROUGH  
DREICER & CO. OR ON  
WEST 46TH STREET

560 FIFTH AVE.  
NEW YORK

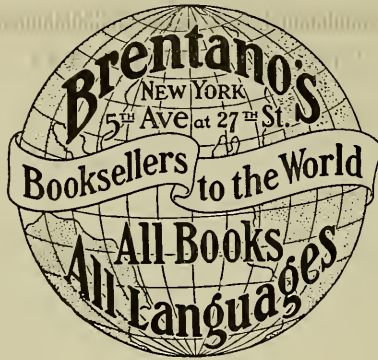
HENRY REINHARDT & SON

GALLERIES  
565 FIFTH AVENUE  
NEW YORK

PARIS

CHICAGO

# French Art Publications



American Agents for

## L'Art et les Artistes

The leading French Art Journal

COMPLIMENTS OF

## THE WHITNEY STUDIO

8 WEST EIGHTH STREET

EXHIBITIONS DURING JANUARY,  
FEBRUARY AND MARCH



# FRENCH LINE

COMPAGNIE GÉNÉRALE TRANSATLANTIQUE

## NEW YORK-BORDEAUX-PARIS

WEEKLY DEPARTURES

ON FAST QUADRUPLE AND TWIN SCREW STEAMERS  
FOR ALL INFORMATION APPLY

COMPANY'S OFFICE: 19 STATE ST., NEW YORK

PRINCIPAL AGENCIES

139 N. Dearborn St., Chicago, Ill.

806 Common St. New Orleans, La.

127 E. Baltimore St., Baltimore, Md.

219 N. 10th St., St. Louis, Mo.

10 Congress St., Boston, Mass.

22 Notre-Dame St., W. Montreal, Can.

630 Montgomery St., San Francisco, Cal.

673 Market St., San Francisco, Cal.

663 Main St., Winnipeg, Man., Can.

Broad & Samson St., Philadelphia, Pa.

1419 New York Av., Washington, D. C.

19 Adelaide St., Toronto, Ont., Can.



## DEVOE

### ARTISTS' TUBE COLORS

*"The Standard Quality"*

Are scientifically true colors, prepared from carefully selected pigments — thoroughly incorporated with the purest oil and have that firm consistency and fineness of texture required by artists.

CANVAS, ACADEMY BOARDS, FINE BRUSHES  
FOR OIL AND WATER COLOR PAINTING, Etc.

## DEVOE

### SUPERIOR WATER COLORS

IN HALF PANS

*Write for Catalogue*

# DEVOE & RAYNOLDS CO., Inc.

NEW YORK

— CHICAGO

— KANSAS CITY

1-<sup>2</sup>8363

















18

SMITHSONIAN INSTITUTION LIBRARIES



3 9088 00283228 5

chm N6846.L79

Loan exhibition of French art :